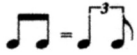


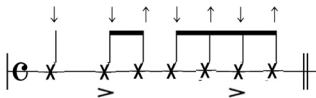


ホノルル・ハウ・ドゥー・ユー・ドゥー



Music by: Johnny Noble

ブラッシング・イントロ



- ・コード・ストロークをメインにしたジャカ・ソロです。
- ・3拍、7拍にアクセントを置いた、軽やかなシャッフルストロークをしましょう。
- ・最初はゆっくりから、慣れてきたらだんだん速いテンポで弾けるようにしましょう。

Chord progression and guitar tablature for the main body of the song. The notation is organized into systems, each corresponding to a specific chord or set of chords. Fingerings and strumming directions (up/down arrows) are indicated throughout.

System 1: C chord. Tablature for strings 1-6.

System 2: C, G7, Gb7, G7 chords. Tablature for strings 1-6.

System 3: E, E7, Am chords. Tablature for strings 1-6.

System 4: D, D7, Bm7, D7, G7 chords. Tablature for strings 1-6.

System 5: C chord. Tablature for strings 1-6.

System 6: A7, Dm chords. Tablature for strings 1-6.

System 7: F6, Fdim, C, CM7, A7 chords. Tablature for strings 1-6.

System 8: FM7, F6, G7, C, CM7, C7, A7 chords. Tablature for strings 1-6.

System 9: FM7, F6, G7, G6, C (cut), Bbm7, C6 chords. Tablature for strings 1-6, including a cut-off chord and a final chord with a double bar line.